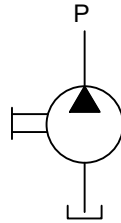


**Description**

Radial piston pump model 1RB3 are arrangement with 3 pumping elements. These are Small, low weight, rugged oil immersed type radial piston pump. These pump are external mounting type, Face Mounting. valve Control, Fixed delivery, Bi-Directional rotation of shaft.

**Hydraulic Symbol**

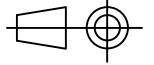
Model : 1RB3

**Technical Specification**

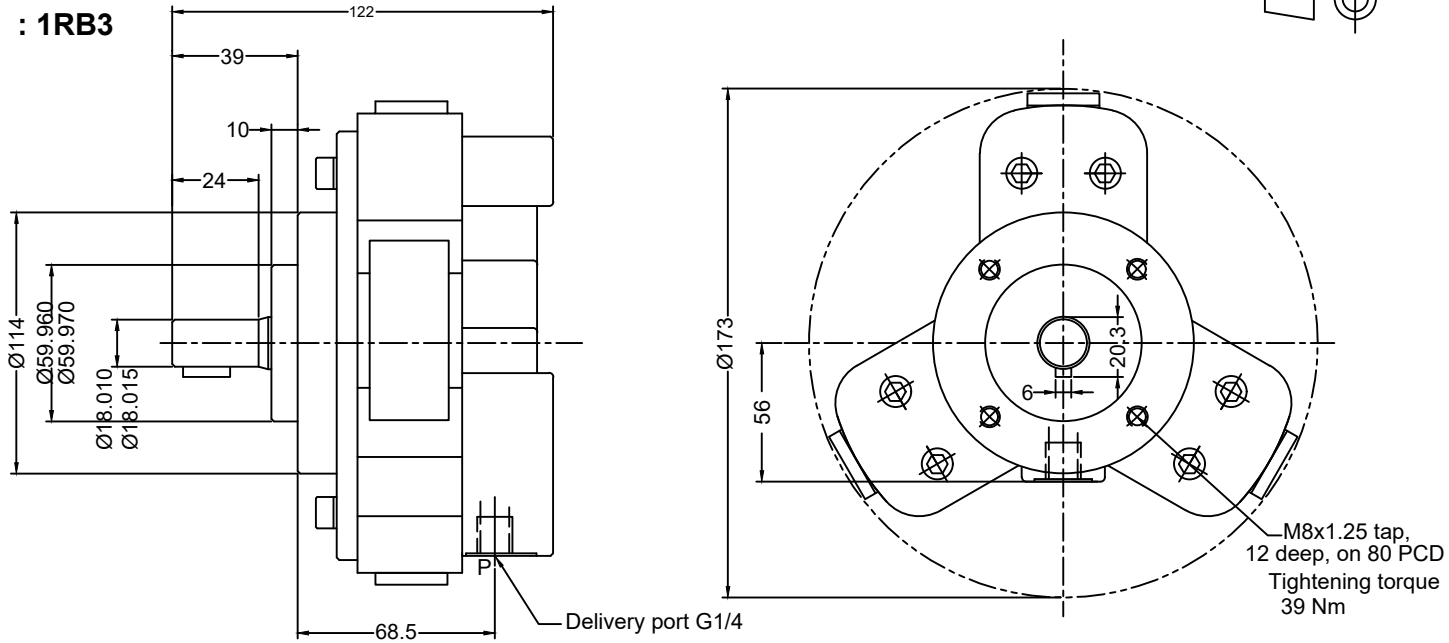
Design	:	1RB is a basic radial piston pump. This pump is valve controlled and oil immersed.
No. of pumping elements	:	3
Mounting interface	:	Factory standard, face mounting.
Direction of rotation	:	1RB3 - Bi-directional pump
Connection	:	Suction port - Sucks oil directly from tank, no suction port Delivery port (P) - G1/4 female
Speed range	:	300 to 2000 rpm
Flow and Pressure	:	Refer Performance table.
Torque limitation	:	Input drive shaft - 75 Nm
Hydraulic medium	:	Mineral oil
Viscosity range	:	10 cSt to 100 cSt
Temperature range	:	-20°C to +80°C
Fluid cleanliness req.	:	ISO 4406 20/18/15 or better
Mass	:	1RB3 - 5.3 kg

**Unit Dimension**

Dimensions in mm



Model : 1RB3

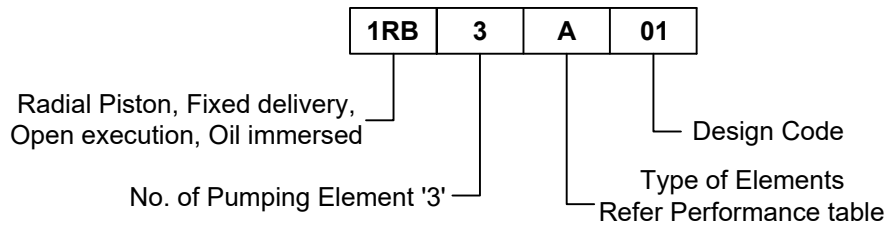


**Performance Table**

No. and type of Elements per section	Geometrical displacement in cm <sup>3</sup> /r	Pump Output in l/min at 1450 rpm	Max Operating pressure in bar	Pressure in bar													
				50	100	150	200	250	300	350	400	450	500	550	600	650	700
3Z	0.69	0.9	700	0.10	0.19	0.29	0.39	0.48	0.58	0.68	0.77	0.87	0.96	1.06	1.16	1.25	1.35
3A	1.20	1.6	550	0.17	0.34	0.51	0.69	0.86	1.03	1.20	1.37	1.54	1.71	1.89			
3B	1.89	2.6	450	0.27	0.54	0.80	1.07	1.34	1.61	1.88	2.14	2.41					
3C	2.70	3.7	350	0.39	0.77	1.16	1.54	1.93	2.32	2.70							
3D	3.18	4.3	300	0.45	0.91	1.36	1.81	2.26	2.72								
3E	3.69	5.0	250	0.53	1.05	1.58	2.10	2.63									
3F	4.23	5.8	200	0.60	1.21	1.81	2.41										

1kW = 1.3410 hp

**Ordering Code**



Note : Torque limitation - The sum of torque used for the piston pump and torque used at extension shaft end should not exceed 75 Nm (11 kW at 1450 rpm)