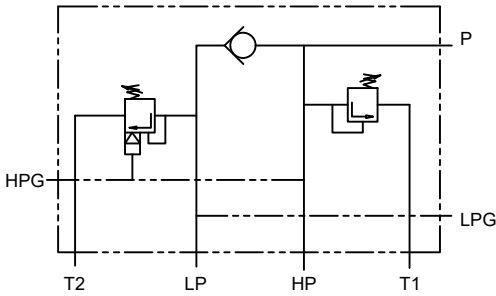


**Description**

Designed to control Double pump of Hi-Low system. Unloads low pressure pump when system pressure rises above the pressure set on unloader valve. Relieves high pressure pump when system pressure reaches the value.

**Hydraulic Symbol** Model : PCM06/06



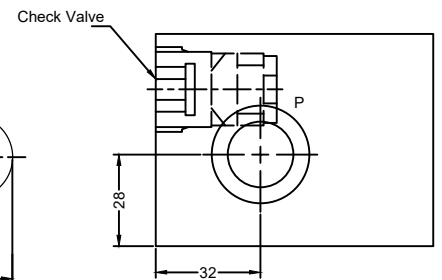
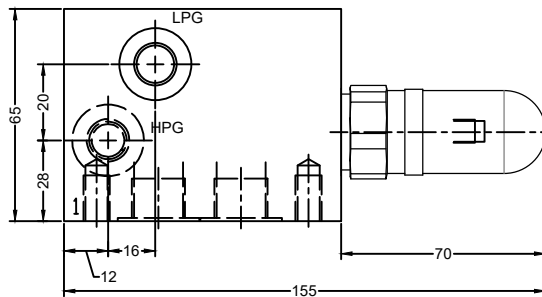
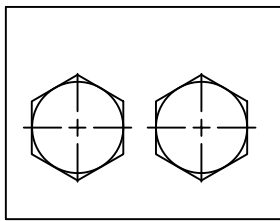
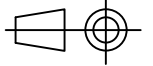
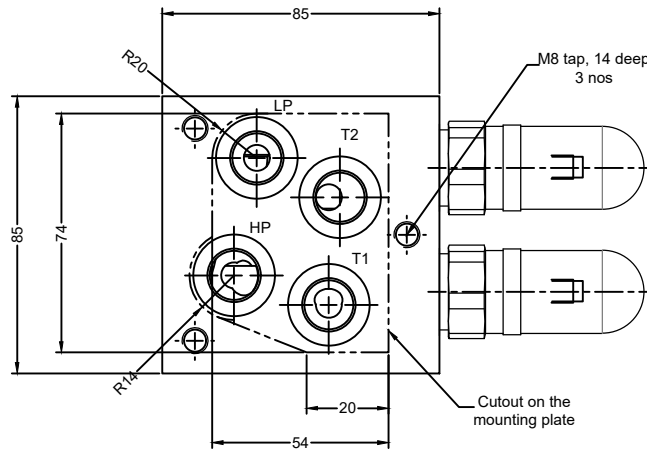
**Connection Details**

- HP --- High pressure pump connection
- LP --- Low pressure pump connection
- P --- Out let connection
- HPG --- Gauge connection on high pressure pump line
- LPG --- Gauge connection on low pressure pump line
- T1 --- Tank connection of high pressure relief valve
- T2 --- Tank connection of low pressure unloader valve

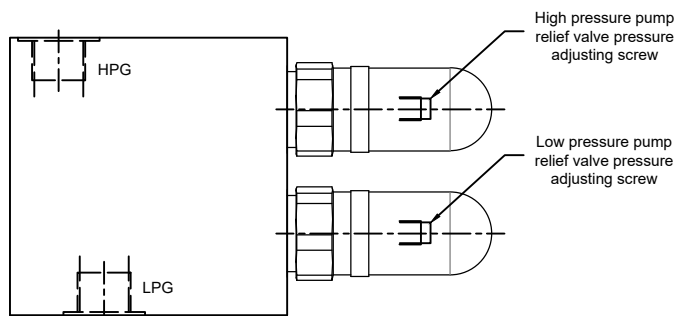
**Unit Dimensions**

**Model :PCM 06/06**

Dimensions in mm



| Port Detail |      |
|-------------|------|
| HP          | G3/8 |
| LP          | G3/8 |
| P           | G1/2 |
| HPG         | G1/4 |
| LPG         | G1/4 |
| T1          | G3/8 |
| T2          | G3/8 |



**Technical Specification**

|                        |   |   |
|------------------------|---|---|
| Design                 | : | PCM 06/06 are Direct acting poppet type high pressure relief valve. Two stage poppet type low pressure unloading valve, |
| Mounting interface     | : | Threaded body (Factory standard)  |
| Mounting position      | : | Optional  |
| Flow direction         | : | As per hydraulic symbol   |
| Opp Pressure for       | : | Low pressure pump port 100 bar max.<br>High pressure pump port 100,200 and 315 bar                                      |
| Flow handling capacity | : | PCM06/06 25 l/min for high pr. 25 l/min for low pr.   |
| Hydraulic medium       | : | Mineral oil   |
| Viscosity range        | : | 10 cSt to 100 cSt   |
| Temperature range      | : | -20°C to +80°C  |
| Fluid cleanliness req. | : | ISO 4406 20/18/15 or better   |

**Ordering Code**